

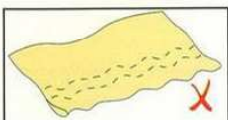
FW-777 Series 縱筒型三針五線雙面飾綳縫機

CYLINDER-BED FEED-UP-THE-ARM INTERLOCK MACHINE

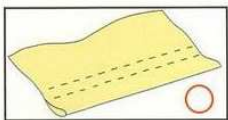


雙齒差動比，車縫時不起波浪。

There is no puckering on clothes due to the differential feed ratio design.



起波浪。
Causes puckering.



雙齒差動比不起波浪車縫。
Light fabric sewn by our differential feed ratio design.



FW-777-603 W/ Differential Ratio

伺服馬達選配 SERVO MOTOR (OPTION)



適用於各式膠條。(SL Device)
Attached with tape folder on presser foot.



適用於各種針織品、運動服膠條。(膠骨)
Applicable to covering seams on all sorts of knitted goods, sportswear.(Cover Stitch)



適用於各式休閒服折袖口、折下擺。(折下擺)
Applicable to hemming bottoms on T-shirts, underwear and sports wear.(Hemming)



活動式底線供給結構，可隨心所欲操作高低穿線。
New design looper take-up device for easy threading.



簡易調整差動比。
It is easy to adjust the differential feed ratio.



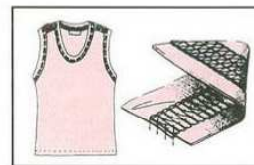
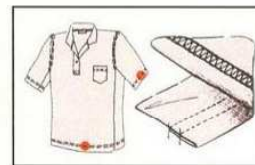
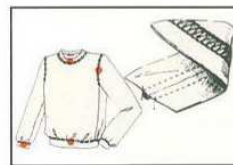
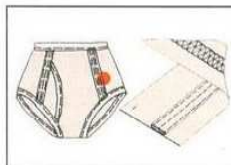
底線供給機構，全新密封設計，完全不會被布。
Securely covered take-up device, free from thread wound or tangled.

<http://www.shingling.com.tw>

SHING LING
星菱牌工業用縫紉機
INDUSTRIAL SEWING MACHINE



FW-777 W/O Differential Ratio



Model No.			 mm	 mm	 mm	 mm	 s.p.m.
FW-777-(603)-240	2	3	1.5-5	4.0	5.5~7.5	2.5~5	3500
FW-777-(603)-248	2	3	1.5-5	4.8	5.5~7.5	2.5~5	3500
FW-777-(603)-356	3	5	1.5-5	5.6	5.5~7.5	2.5~5	3500
FW-777-(603)-364	3	5	1.5-5	6.4	5.5~7.5	2.5~5	3500
FW-777-(603)-464	4	6	1.5-5	6.4	5.5~7.5	2.5~5	3500