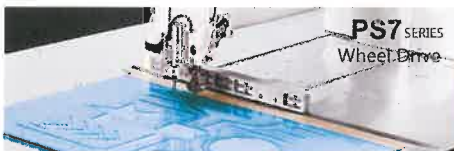


NH-PS Series

MULTI-FUNCTION CNC
AUTOMATIC TEMPLATE
PATTERN SEWER MACHINE



X / Y axis multiple transmission mode selection



PS7 SERIES
Wheel Drive



PS8 SERIES
Belt Drive



PS9 SERIES
Screw Drive

- Multiple patents! A variety of High-Tech applications, the core use of imported parts!
- Up models style choice: (X-axis infinite) Y-axis arm length: 500/700/900/1100 MM



NH-PS7 CNC

automatic template sewing machine, the recruitment difficulties, labor costs are high and complex sewing process requirements, break through the traditional concept of study, will be integrated into the computer control technology is the most advanced sewing machine, advanced design concept, functional excellence, subvert the traditional process, the sewing process of traditional be revolutionary update!

NH-PS7 Equipped with powerful recognition of clothing CAD file format independent software, file path generation sewing, in addition to its own acquisition system pattern, also can read the document pattern electronic pattern stroke stitch, easily into the open slot is required to work on track, stitching, draw a line, and various operating trajectory. Completely print type sewing!

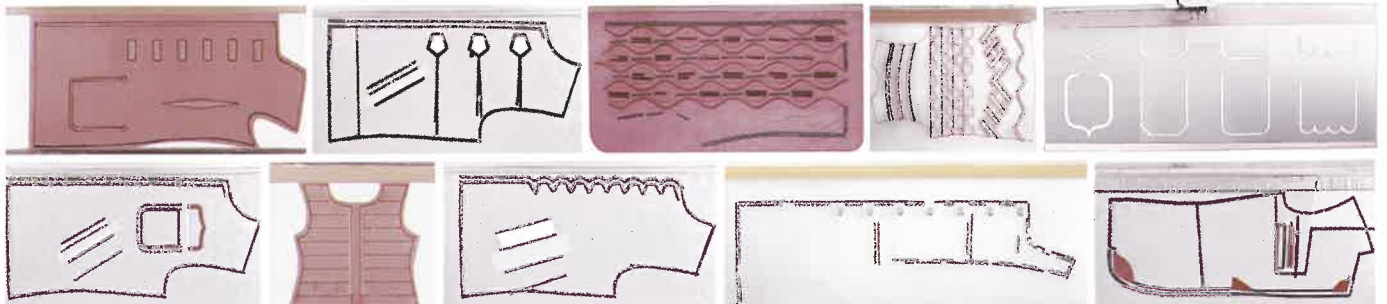
To modify or increase the automation mechanical action according to the actual situation of work, let the machine automation intelligent work, effectively improve the production efficiency, one button operation, as long as a button press driven machine will automatically, as long as the workers to prepare other template.

Completely

solve the electronic flat and long template machine traditional, workers need to push, and push out of the car line spacing is not that is not standard. Disadvantages of low working efficiency.

This machine more touch automatic plate recognition function, automatic recognition of touch panel pattern! Have upper and lower dot stroke function, reduces the working procedure and workers, to improve the efficiency to the extreme! With *greatly improve quality, more handy for specific process requirements of production, conform to the standard operating procedure! Reached the world advanced level in quality and technology, as the sewing enterprises to save workers to improve production efficiency, save the production cost, improve competitiveness!

Can sew all kinds of templates (sewing length unlimited)



NH-PS7 is equipped with a powerful CNC automatic sewing conversion software.....

NH-PS7 Multi-function cnc automatic template machine, equipped with a powerful CNC automatic sewing conversion software, can receive and read the development and design of the electronic paper document design strokes stitch, easily

into the open slot is required to work on track, sewing stitch, painting a stitch, whatever all tracks. To modify or increase the automation mechanical action according to the actual situation of work, let the machine automation intelligent work.



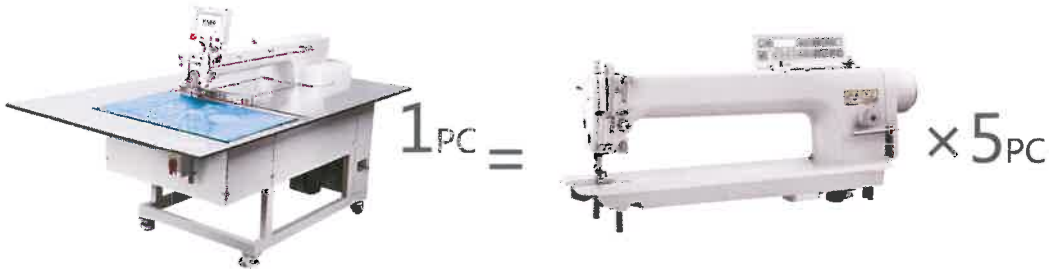
Compared with the long arm template machine NH-PS7 automatic machine with the traditional template.....

The long arm of the template 1: traditional: not only need workers push, and push out of the car line spacing is not that is not standard. The work efficiency is low. The disadvantages.

2: CNC multi function automatic sewing machine (automatic template machine):

K 7 CNC multi function automatic sewing machine (automatic template machine) can receive and read the development and design of the electronic paper documents or self patterns. Effectively improve production efficiency, one button operation, as long as a button press driven machine will automatically according to the pattern operation to open slot,

automatically according to the patterns of running vehicle stitch, workers freedom to prepare other templates work, this machine more touch automatic plate recognition function, automatic recognition of touch patterns in corresponding! Have upper and lower dot stroke function, reduces the working procedure and workers, so that the efficiency of the acme! With "greatly improve the quality of the product, more handy for special the technical requirements of the product! Fashion women's coat automatic sewing a button front edge, decorative lines, and automatic painting, integration of the whole self NC template automatic sewing machine, save your workers to improve production efficiency, save the production cost, improve competitiveness.



NH-PS7 production efficiency of senior technical workers 5 times, And high machining precision, more stable quality, A year to recover the investment cost.

THE UNIFORM REQUIREMENTS, NH-PS7 HAS THE QUALITY STANDARD OF PERSONNEL, IMPROVE PRODUCTION TECHNOLOGY TO REDUCE VARIOUS ADVANTAGES.....

Machinery and equipment directly affects the quality of products. The same equipment will directly affect the production schedule and efficiency. On the production set special for today's sewing enterprises, "recruitment difficult, high wages" is the most headache thing, the traditional machine equipment requires not only a large number of workers to do, also can't satisfy the industrialized efficient production processes. Only the optimization of production, the use of scientific industrial production process, also need advanced production equipment with matching, so as to improve the efficiency, the production of high quality products. So the NH-PS7 automatic sewing machine selection becomes the inevitable choice of clothing enterprises.

The clothing industry began a serious lack of technical staff in the technology industry is like, began to appear on the fault, and the quality demand is rising, business costs continue to increase, the cost of traditional clothing production costs increase, sewing talent has become more and more intense, resulting in the current garment industry recruitment difficult problem. With the increasingly mature technology machinery, NH-PS7 to solve this problem appears in the clothing industry and began to show in the industry fist, quality standard, technical content requirements to reduce cost, increase yield, and other advantages to play, everything.

NH-PS7 MULTI-FUNCTION CNC AUTOMATIC TEMPLATE MACHINE APPLICATION IN THE SEWING INDUSTRY WIDE:

1: eiderdown, cotton, woolen coat, jacket and other kinds of clothing: (automatic sewing all kinds of clothing pattern stitch, automatic sewing pattern lines, automatic sewing a belt, coats of massage paste buckles. Automatic point marking and so on multi function)



2: car cushion, sofa household, toys: (auto sew all kinds of pattern stitch)



3: bags, leather goods, shoes and hats: (automated sewing various pattern stitch)



LARGE COLOR LCD TOUCH SCREEN

Using the most advanced large color LCD graphic display and touch screen, the whole Chinese (or English) interface all stick out a mile. The operational convenience is greatly improved, the basic operation of the key implementation illustrates, all kinds of information through the selected language, any operation adjustment can be simple in operating panel.



PROGRAMMING IS SIMPLE AND CONVENIENT, AVAILABLE U DISC RECORDING

Through the PC software directly used clothing CAD software to generate DXF and PLT graphics, identification of the format is DXF \.PLT \.DST \.AI. Programming is simple and convenient, can also be inserted U disk read graphics programming in addition, or PC software into executable program



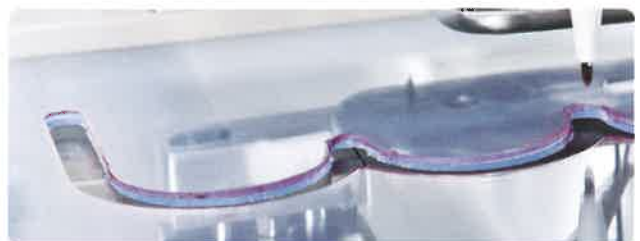
AUTOMATIC RECOGNITION TEMPLATE PATTERN DATA

The machine can automatically identify the template, automatic identification start sewing, one button operation, standard operation process!



AUTOMATIC POINT LINE DRAWING FUNCTION

A little bit and drawing function. An upper and a lower point pen ready for processing before the next working procedure, saving 1 painting workers. To improve the efficiency to the extreme!



OPTIONAL AUTOMATIC OPENING SLOT FUNCTION

According to the actual sewing pattern in a blank template, a sewing die groove track next, save to buy opening slot machine, faster and improve production efficiency.



AUTOMATIC TEMPLATE MANIPULATOR

Automatic template manipulator, stop position can also be according to different habits in any position, reduce the labor intensity of operating workers



- Hitherto unknown reduces the skilled workers are required! For novice workers without any training to operate the machine, and efficient production of qualified products!
- Effectively improve the production efficiency! One button operation, operation workers just click on the start button machine will automatically run, workers can prepare other template, make the work cycle without pause, play a maximum efficiency of productive forces!
- A little bit and drawing a line function! In comparison with the traditional sewing machine, compared to other models, sometimes difficult process, to sweep the pink car line, (sweep powder can cause stains), manual car line will be winding is not standard, but automatic sewing machine with point and line drawing function with upper and lower point pen ready for processing before the next working procedure, saving 1 painting workers. Made out of each product is standard; the machine to avoid this process, save workers and environmental pollution to improve the efficiency to the extreme!
- Improve the quality of the products very much! Because the control procedure, to ensure that all products needle distance and sewing to do standards, and can easily realize the special requirements, such as for the corner clothes encryption sewing, or double line sewing on some sites, just join the program at can be in one step, for the special requirements of the production is handy!
- Multiple functions, wide application! Can be adapted to the template processing, can also be applied to the no template sewing and Quilting Cotton, processing can be applied in leather and simple patterns can be produced; in production, does not need manual operation, can vacate a hand to put template, for a after the car block template, a template is placed immediately, cyclic production will not be a waste of time!
- Graphics are simple and convenient! You can manually read directly programming graphics, can also be used directly by the upper software clothing CAD software generated DXF and PLT graphics, identification of the format is.DXF\PLT\DST\AI or PC software into executable program!
- Stop position can also be according to different habits in any position! Reduce the labor intensity of operating workers;
- With the broken wire detection function, when broken machine can immediately suspend, etc. installed line after confirmation of unfinished sewing! The bottom line monitoring function can be in when the bottom line should not be sewn up after a template to give tips, replace the bottom line.
- With automatic pattern recognition function! System without artificial selection, can choose automatic recognition to 999 styles template pattern sewing program!
- Color touch English interface control panel screen digital! Make the operation more convenient, simple, easy to understand!
- Sewing range! Width can be selected models to 700mm, length to be infinite, unlimited, can easily sew;
- Even stitches and reliable, in comparison with the traditional sewing machine, hand push template stitch will short unstable, automatic sewing machine stitch will be very uniform;
- Optional automatic opening slot function. In the blank template. According to the actual sewing pattern, a sewing die groove rail, save to buy opening slot machine.
- Optional automata man hand receiving function. Using automata man hand cart suture material, greatly reduce the labor force, the working cycle does not stop!
- Optional automatic transmission. The template function template automatically send original working position, make the work cycle without pause, play the maximum production efficiency!!
- Optional steam floating table panel, the template easily floating transfer work more smoothly!
- Optional infrared positioning stage. The sewing materials, easy neatly consistent!

NH-PS7-45BHJ	(operating range: X axis infinite length; width Y axis 45cm) (Table Width 120cm. without auxiliary units) (Large Hook)
NH-PS7-65SHJ	(operating range: X axis infinite length; width Y axis 65cm) (Table Width 120cm. without auxiliary units) (Small Hook)
NH-PS7-70BHJ	(operating range: X axis infinite length; width Y axis 70cm) (Table Width 120cm. without auxiliary units) (Large Hook)
NH-PS7-72BHJ	(operating range: X axis infinite length; width Y axis 72cm) (Table Width 120cm. without auxiliary units) (Large Hook)
NH-PS7-82BHJ	(operating range: X axis infinite length; width Y axis 82cm) (Table Width 120cm. without auxiliary units) (Large Hook)
NH-PS7-90BHJ	(operating range: X axis infinite length; width Y axis 90cm) (Table Width 90cm. with Two auxiliary Unit) (Large Hook)
NH-PS8-50BHJ	(operating range: 100 X-axis length; width Y axis 50cm) (Table Width 120cm. without auxiliary units) (Large Hook)
NH-PS8-60BHJ	(operating range: 100 X-axis length; width Y axis 60cm) (Table Width 90cm. with Two auxiliary Unit) (Large Hook)
NH-PS8-82BHJ	(operating range: 120 X-axis length; width Y axis 82cm) (Table Width 90cm. with Two auxiliary Unit) (Large Hook)
NH-PS9-60BHJ	(operating range: 120 X-axis length; width Y axis 60cm) (Table Width 90cm. with Two auxiliary Unit) (Large Hook)
NH-PS9-80BHJ	(operating range: 120 X-axis length; width Y axis 80cm) (Table Width 90cm. with Two auxiliary Unit) (Large Hook)
NH-PS9-100BHJ	(operating range: 120 X-axis length; width Y axis 100cm) (Table Width 90cm. with Two auxiliary Unit) (Large Hook)

NOTE: Models with a letter on behalf of:

A - regular models B - with open cavity function L - cutters trimming function F - Automatic hand rewinding function
 W - Automatic transfer template function T - infrared positioning table M - steam floating work platform

Pitch: 0.5mm to 6mm

Sewn speed: 200rpm ~ 2800rpm (2.5mm pitch, Ordinary line)

Template files can be identified: 999;

Sewing needle: DP × 17 # 11 (# 8 - # 24); DP × 5 # 7 - # 24

Program input device: PC USB data cable or U disk

* The appearance may be improved with the picture shown is not the same

* Production efficiency is not the same according to the operator's Proficiency in operating conditions , operating environment

Program Memory Carrier: EPROM memory

Program memory: Up to 999 kinds

Sewing machine motor: 650W direct drive servo motor

Total weight: 300kg Power supply: 220V 1200W

Using air Specifications :0.25-0.4 MPa (Max 0.5MPa)

Packing size: 210 × 150 × 130 CM